

CASE STUDY: PANNONIA BIO PROCESS CONTROL FACILITY

Client:
Pannonia Bio Group Ltd

Project name
Process Control Facility

Market sector:
Bioenergy,
Process Control

Project location:
Hungary

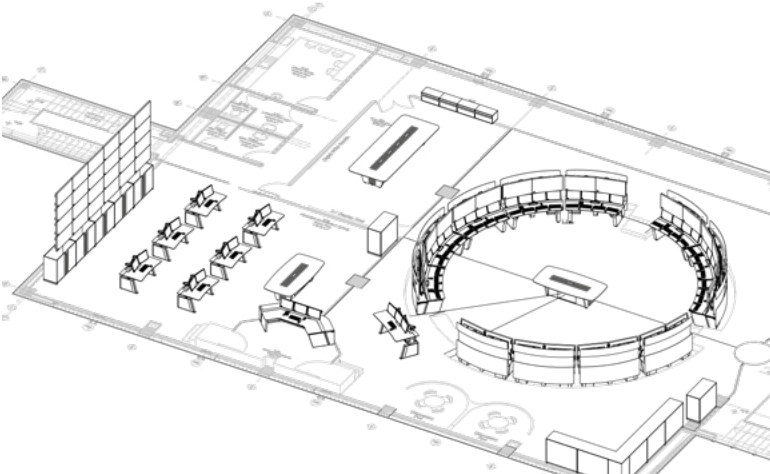
Operator stations:
20 consoles
3 meeting spaces

Budget:



About Pannonia Bio

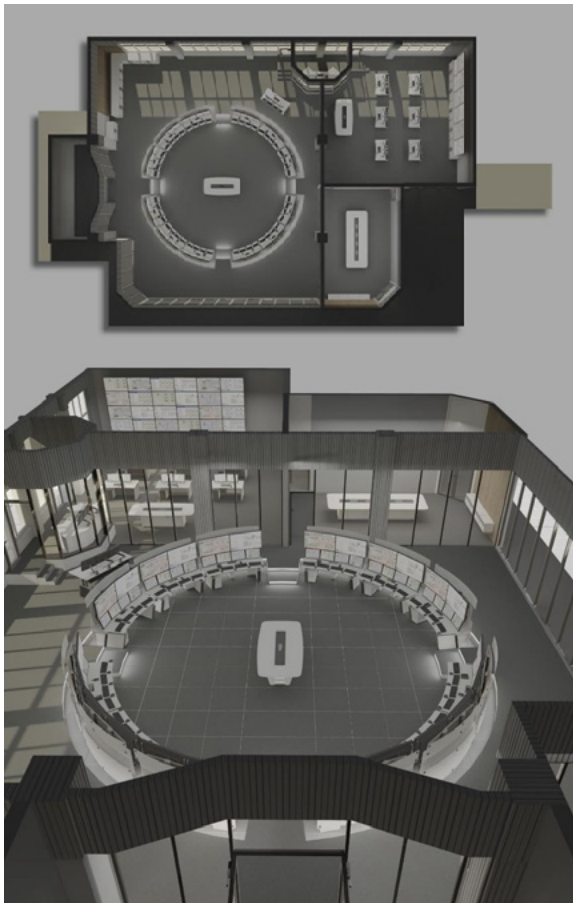
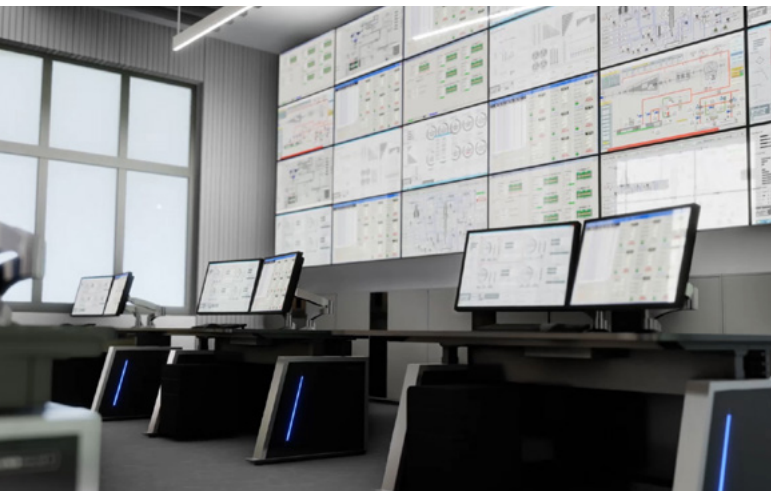
Pannonia Bio, are a subsidiary of the ClonBio Group Limited, a family-owned agribusiness, and leaders in biofuel production. They focus on innovation and sustainability, utilising advanced technologies to optimise agricultural resource use, improve product yields, whilst significantly reducing environmental impact. As a key stage of their growth and development plan, Pannonia Bio were establishing a new state-of-the-art process control facility located in Hungary.



CASE STUDY: PANNONIA BIO PROCESS CONTROL FACILITY

Why Pannonia Bio Chose LundHalsey

LundHalsey was selected due to our credentials and renowned ability in delivering high-end bespoke control room solutions to perfectly blend functionality and technology integration with cutting-edge ergonomic design. Our knowledge and expertise in control room design and product manufacture meant that we could meet very precise technical and aesthetic demands within strict budgetary constraints, making us the ideal partner for this state-of-the-art control room project.



The LundHalsey Approach

The scale and scope of this project required that we would need to utilise and adapt the full range of our control room furniture solutions, which included a combining feature rich control room consoles alongside our high-end meeting room solutions, which were then tailored to the specific needs of the project:

The furniture solutions we delivered include:

Kontrol Air Consoles: custom-designed consoles included bespoke back panels and dividers created by our award winning Red Dot design team. Reinforced work surfaces were also engineered to accommodate the additional weight of multiple monitor arrays, whilst ensuring stability and durability.



Visionline Height Adjustable Consoles:

these consoles enhance flexibility and ergonomic comfort, suitable for environments used by multiple operators. They allow for height adjustments to reduce fatigue and boost productivity.



Kontrol Command Consoles: developed for enhanced control room management, this console offers comprehensive functionality with robust security features and seamless equipment integration.



Kontrol Meet Tables: including a height-adjustable central table, plus two additional meeting tables to facilitate effective communication and collaboration whilst matching the aesthetics and quality of the control room furniture.



Kontrol Meet Auxiliary Furniture:

designed to coordinate perfectly with our meeting table range, we manufactured and installed an array of high-quality wall and floor-mounted storage units.



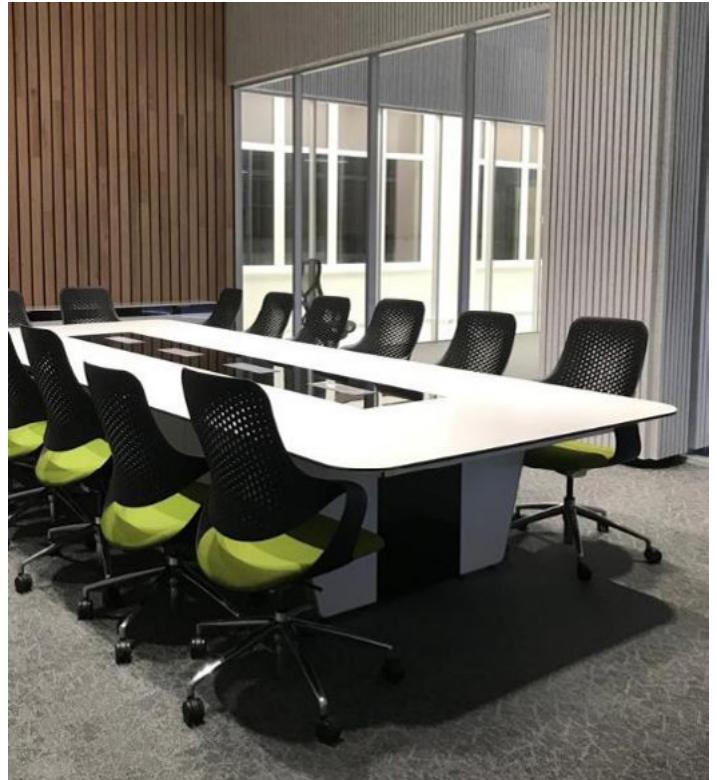
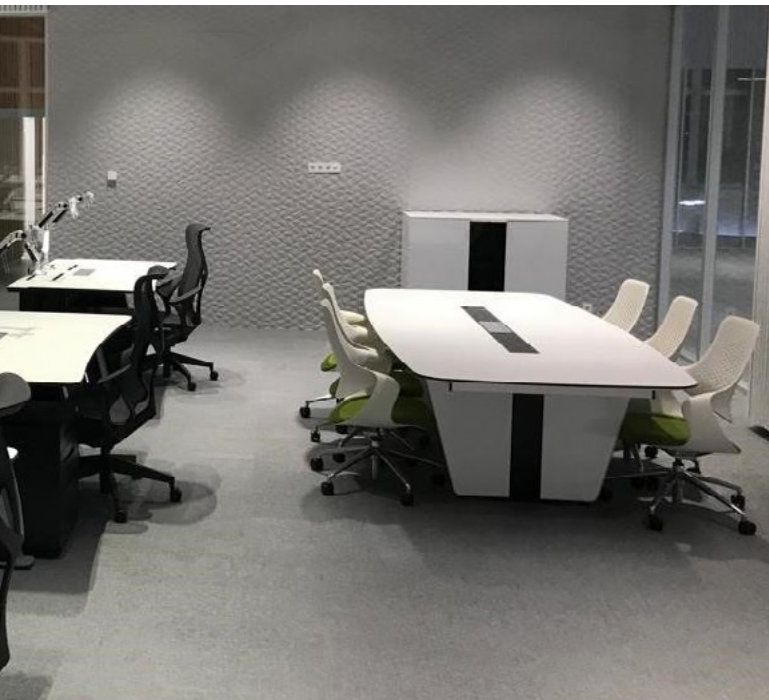
Operator Seating: A critical component of any control room design and operation, is operator comfort so we supplied high-quality ergonomic and multi adjustable 24/7 operator chairs for each workstation.



CASE STUDY: PANNONIA BIO PROCESS CONTROL FACILITY

Collaboration and Integration

In close collaboration with the working environment and human factors design teams, we tailored our furniture solutions to integrate seamlessly with Pannonia Bio's specific requirements to enable efficient process control management and workflow. Our approach focused on operator well-being and operational efficiency, incorporating ergonomic furniture design and control room environment design factors such as line of sight layout, room ergonomics, lighting design, and acoustic performance to ensure a comfortable, efficient and effective control room environment. We undertook product visualisation & design, manufacture, and quality control through to logistics from our UK based, with us then deploying team of project management and installation specialists to set-up the facility at the site in Hungary.



TAKE A TOUR...

We are proud to feature a control room 'flythrough' video on our website that showcases the completed Pannonia Bio project and enable you to experience the unique nature and scale of the LundHalsey solutions delivered.

[Visit our Design services page here to watch the video.](#)

CASE STUDY: PANNONIA BIO PROCESS CONTROL FACILITY

Services delivered:

- // Project scoping and planning
- // Product design and visualisation
- // Custom consoles
- // Stock consoles
- // Custom meeting furniture
- // Stock meeting furniture
- // Full installation
- // Project Management

In Summary

Successfully delivering the Pannonia Bio project within budget and to the client's high standards underscores LundHalsey's dedication to excellence. Our bespoke solutions, combining high functionality with sophisticated premium design, highlight our leadership in bespoke control room furniture design and installation. This project has not only enhanced our portfolio but also showcases our commitment to meeting and adapting to the specific needs of the bioenergy sector, with a strong focus on enhancing both operator well-being and operational efficiency.



For more information or to discuss your next control room project please email salesteam@lundhalsey.com or call [+44 \(0\) 1296 489964](tel:+44201296489964)

**DESIGN AND VISUALISE YOUR PERFECT CONSOLE
WITH LUNDHALSEY DESIGN MY CONTROL ROOM®**